

# UNIVERSAL CERAMICO



منتجات عزل حراري ومنع نش  
مواد بناء تخصصية

Thermal Insulation  
&  
Waterproofing Products  
Special Construction  
Additives

MADE IN  
LEBANON



ISO 9001: 2015  
BUREAU VERITAS  
Certification



الجمهورية اللبنانية  
وزارة الاقتصاد والتجارة  
المديرية العامة للاقتصاد والتجارة  
مصلحة حماية الملكية الفكرية



### Waterproofing, Thermal Insulation and Specialized building Material.

- Eco-friendly, Antibacterial Advanced Natural Chemical Compounds made out of Ceramic, Marble, Aluminum Oxide, others components and Water based Silicone.
- Odorless, Safe, Not Harmful & Not Hazardous.
- Patented and Certified by Local and International Bodies.

## PRODUCTS

### UC-1 (Waterproof & Thermal Insulation)

- **Advanced Eco-friendly, Antibacterial Waterproofing and Thermal insulation paint** consisting of Ceramic, Marble, Aluminum Oxide and other components mixed with water based silicone.
- **Used for concrete roofs, wood, steel, Zinc (Corrugated Galvanized Steel Sheets) and any other exposed to humidity areas.**
- **Efficiently Decreases temperature 8 to 10 Degrees C.** and could be used in cold areas where temperature reaches down to 20 Degrees C. below zero.
- Available in white color for roofs.
- Weight 19.5KG.
- o 1 Pack can be applied for 30m2 for 3 layers



### UC-1 Colors (for External Walls)

- **Advanced Eco-friendly, Antibacterial Waterproofing and Thermal insulation paint** consisting of Ceramic, Marble, Aluminum Oxide and other components mixed with water based silicone.
- **Used for external walls and any other exposed to humidity areas, applied as final paint layer.**
- **Efficiently Decreases temperature 8 to 10 Degrees C.** and could be used in cold areas where temperature reaches down to 20 Degrees C. below zero.
- Available in various colors.
- Weight 19.5KG.
- 1 Pack can be applied for 40 m2 for 3 layers



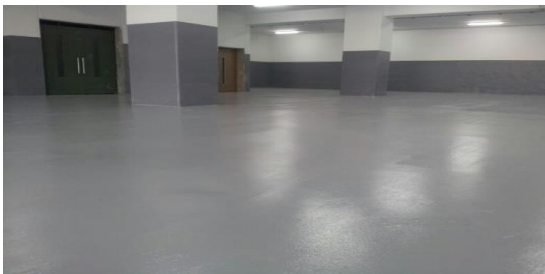
### **UC-1 Interior Antibacterial Paint**

- **Advanced Eco-friendly, Antibacterial paint.**
- Used for internal walls paint at houses, hospitals, schools, factories, Food Processing areas,... etc.
- Washable and can be cleaned.
- Available in various colors, Weight 18.5KG.
- 1 pack can be applied for 60m2 for 3 layers



### **UC-3 Industrial Epoxy**

- **Water based Eco-friendly and Antibacterial Epoxy.**
- One component Consisting of powder with resin epoxy; Suitable for Car Parks, Garages, Playgrounds, Sidewalks, Factories etc.
- Prevents cracking, non-flammable.
- Available in several colors.
- Weight 19.5KG
- 1 Pack can be applied for 40m2 for 3 layers



### **UC-2 Protection, waterproof, Antibacterial Paint**

- **Advanced Eco-friendly, Antibacterial Waterproofing and anti-leakage paint, Acidic resistant.**
- Used for swimming pool walls, tanks, subsurface sheer walls, wet areas prior tiling, sewage tanks and manholes, foundations and other options.
- **Protects foundations and prevents corrosion.**
- Available in Dark and Lite Grey colors.
- Weight 19.5KG.
- 1 pack can be applied for 40m2 for 3 layers



### **UC-4 Joint Sealant**

- **White Colored, water based waterproof flexible Epoxy with 400% expansion flexibility,** used for cracked old roofs, fills the cracks and expands inside it (even during expansion) preventing water leakage.
- Used for concrete joints treatment as well as concrete layer separator.
- Weight 18.7KG
- 1 Pack can be applied for 40 m2 for 3 layers





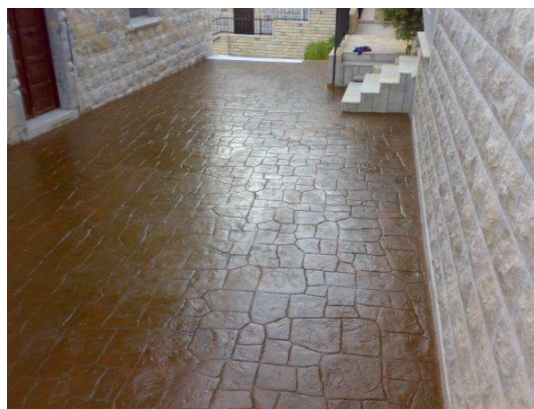
### UC-5 Fair Face Concrete Protection Paint

- Advanced Water based Eco-friendly and Antibacterial Matt cement-colored or Beige colored paint. Consisting of Ceramic powder and Silicone.
- Used for **Fare faced facades on buildings, bridges, tunnels, marine harbors, ... etc.**
- **Resistant to Abrasion and salty water.**
- Weight 20KG
- 1 Pack can be applied for 40m2 for 3 layers



### UC-7 Insulation and Water repellant paint

- **One component, Transparent, Water based Silicon, Semi-gloss everlasting color, Elastic, and Non-Slippery.**
- Mix with 10% of clean water.
- 5 Kg pack after mixing with clean water is enough for 45m2 if applied on 2 layers.
- Used as waterproof and Water Repellant for Natural stone facades, floor tiles, and decorated concrete and other applications.
- Must be applied on 2 layers for better results
- Can be sprayed or Roll painted.
- Weight 5KG



### UC-6 Cementitious Concrete Repair

- **Powder or Liquid additive to concrete that accelerates hardening and increases concrete rigidity.**
- Used for Roads, Bridges and water paths jobs that requires fast execution.
- Used for roof maintenance prior insulation.
- **Prevents cracking and allows concrete hardening within 2 hours which is equivalent to 7 days of standard concrete.**
- Can be used in icy and snowy areas.
- According to the required hardening speed, 5% to 10% of the concrete weight is added to the concrete mixture.
- Weight 20KG.



### UC-8 Insulation Silicon paint for wood

- **One Component, Transparent, Water based silicon, Semi-gloss non-changing color, Elastic.**
- Mix with 10% pure water.
- 5KG pack is enough for 45m2.
- Used for painting and protecting wood and natural wooden decorative items.
- **Water & Moisture Resistant, Mold and Fungus Resistant, Protects from Decay, Flame resistant, & Anti-Slip.**
- Must be applied on 3 layers for best results.
- Can be sprayed or roll painted.
- Weight 5KG



### UC-9 Industrial & Soundproof Gypsum

- **Eco-friendly, Solid, multicolored industrial gypsum.**
- Resistant to abrasion
- Suitable for external decorative items and relevant purposes.
- Can be painted.
- Available in a special formula for **Fast Hardening, Soundproof plastering, and Anti-bacterial.**
- Can be used as a Primer base for final paint.
- Weight 20KG



### UC-10 Industrial Wax

- Very Effective Industrial Wax, to be melted under Tiles or on the grounds.
- Waterproof and Moisture-proof.



### UC+ Special Formulated Products

- Special Formulated components for specific cases developed at Universal Ceramico laboratories.



### UC-10+ Antibacterial Grout

- **Cementitious Powder Grout.**
- **Fast Hardening, Water Repellant, Antibacterial, and Resistant to Fungi Molds and Germs.**
- For joints widths 2mm up to 20mm.
- For all kinds of External and Internal: Tiles, Floors, Walls and Natural Stone Cladding.
- For Residential Buildings, **Restaurant Kitchens, Toilets and Bathrooms, Swimming Pools, Laboratories, Hospitals, Wet and Humid areas,** and crowded areas.
- Available in various colors.
- Weight 5KG



### UC-11 High Contraction & Fast Hardening Mix

- Eco-friendly, Special formula consisting of Silicon dioxide and other components.
- **Very solid and high contraction capability.**
- **Used for road maintenance and similar cases.**
- **Mix with pure water, fast hardening, becomes solid within 50 minutes after pouring and becomes ready for handling vehicle loads.**
- Weight 25KG

